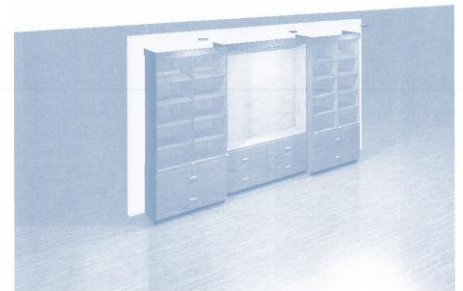


Burlington Police Department 150th Anniversary Museum Display Case Project

On the occasion of the 150th Anniversary, please consider joining the effort to memorialize the history of the Department for years to come with a contribution to the BPD history museum display case.

This new, to-be-constructed case will replace the one located in the main lobby of Police Headquarters in the Antonio B. Pomerleau Building at 1 North Avenue. The case will display artifacts, articles, photographs, and equipment dating back to the origins of the Department and highlighting the evolution of public safety and policing in our great City.



Museum display case rendering

Your contribution will allow you, your business, or someone you choose to honor a place on this display case for decades to come. Contributions can take any one of the following forms:

- \$250** Brass plaque - approximately 3 inches in length by 2 inches in height (30 plaques available)
- \$150** Brass plaque - approximately 3 inches in length by 1 inch in height (60 plaques available)
- \$50** Name or business name engraved on a large brass plaque (70 spaces available)

Contact Name: _____ Contact Phone: _____

Plaque Wording: _____

Amount Due: \$ _____

Please send check, made payable to "Queen City Police Foundation" to:

Queen City Police Foundation Museum Display Case Project
c/o Delaney Meeting & Event Management
1 Mill Street, Suite 315
Burlington, VT 05401
Ph: (802) 865-5202.